



CUSTOMER:

Customer Name: ALINVEST CZ

PROJECT:

Project Code: E2558

Project Name: ALINVEST CZ

DOCUMENT INFORMATION:



Document Title: Equipment Spider Diagram

Customer File Name: 2558-5511-GEN-E-DWG-SPD

Customer Revision Number: -

Customer File Name: 2558-5511-GEN-E-DWG-SPD









Contractor Revision Number: A

						CONTRACTOR		CONTRACTOR dwg number	Rev. A	Project Code E2558	Project Name ALINVEST CZ			
								2558-5511-GEN-E-DWG-SPD		Document Title Equipment Spider Diagram			Scale 1:1	
A	29/11/2025	INITIAL VERSION		RORI	RORI			JOCA		CLIENT dwg number	Rev. -		DESIGNED: ANSA	DRAWN: ANSA
Rev.	Date	Revisions description		Designed	Draw	Approved	2558-5511-GEN-E-DWG-SPD	DATE: 01/12/2025	DATE: 01/12/2025	DATE: 01/12/2025		Sheet 1 OF x		
1														

# HYDRAULIC SYSTEM POWER CABINET


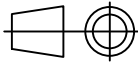
## r41.63-5511-GEN-ESR40-PCP01

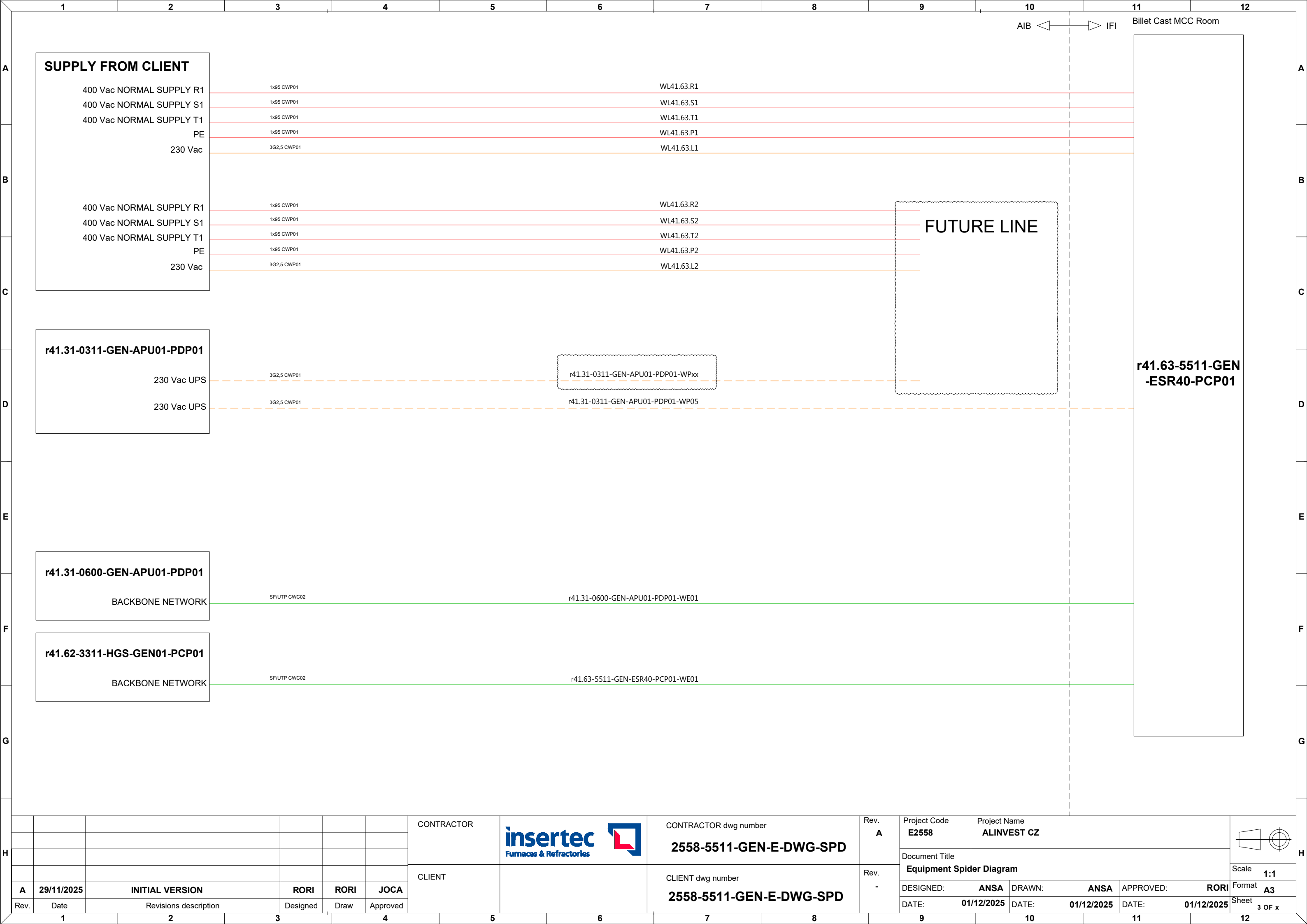
### LEGEND


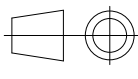
	400Vac Power supply		Regular control signals
	400Vac UPS power supply		Analog & shielded signals
	230Vac Power supply		T/C connection
	230Vac UPS power supply		Communication connection

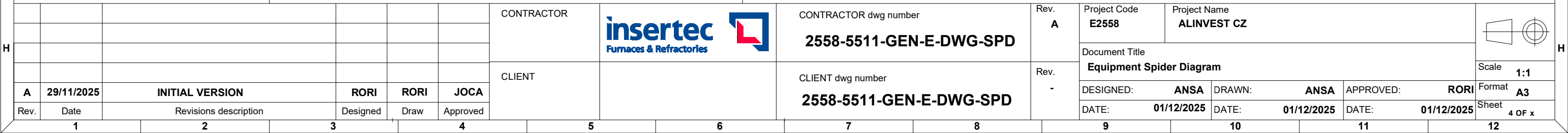
### CATEGORY

Power cables
CWP01: Regular power cables
CWP02: Shielded power cable
CWP03: Flexible power cables
CWP04: Regular high temperature power cables
Instrumentation and control cables
CWC01: Regular instrumentation control cables
CWC02: Shielded instrumentation control cables
CWC03: Thermocouple cable
CWC04: Flexible instrumentation control cables
CWC05: High voltage cables for ignition transformers
CWC06: Regular high temperature instrumentation control cables
Communication cables
CWE01: Fieldbus communication cable (Inside cabinets)
CWE02: Fieldbus communication cable (Outside cabinets)
CWE03: Optic fibre communication cable

						CONTRACTOR		CONTRACTOR dwg number <b>2558-5511-GEN-E-DWG-SPD</b>	Rev. <b>A</b>	Project Code <b>E2558</b>	Project Name <b>ALINVEST CZ</b>				
										Document Title <b>Equipment Spider Diagram</b>				Scale <b>1:1</b>	
<b>A</b>	<b>29/11/2025</b>	<b>INITIAL VERSION</b>		<b>RORI</b>	<b>RORI</b>			CLIENT dwg number <b>2558-5511-GEN-E-DWG-SPD</b>		DESIGNED: <b>ANSA</b>		DRAWN: <b>ANSA</b>	APPROVED: <b>RORI</b>		Format <b>A3</b>
Rev.	Date	Revisions description		Designed	Draw	Approved				DATE: <b>01/12/2025</b>	DATE: <b>01/12/2025</b>	DATE: <b>01/12/2025</b>	Sheet <b>2 OF x</b>		
1		2	3	4	5	6	7	8	9	10	11	12			



H							CONTRACTOR		CONTRACTOR dwg number <b>2558-5511-GEN-E-DWG-SPD</b>	Rev. <b>A</b>	Project Code <b>E2558</b>	Project Name <b>ALINVEST CZ</b>				H								
												Document Title <b>Equipment Spider Diagram</b>					Scale <b>1:1</b>							
												DESIGNED: <b>ANSA</b>	DRAWN: <b>ANSA</b>	APPROVED: <b>RORI</b>			Format <b>A3</b>							
	<b>A</b>	<b>29/11/2025</b>	<b>INITIAL VERSION</b>			<b>RORI</b>	<b>RORI</b>	<b>JOCA</b>	CLIENT dwg number <b>2558-5511-GEN-E-DWG-SPD</b>	Rev. <b>-</b>	DATE: <b>01/12/2025</b>			DATE: <b>01/12/2025</b>	DATE: <b>01/12/2025</b>	Sheet <b>3 OF x</b>								
	Rev.	Date	Revisions description			Designed	Draw	Approved																
	<b>1</b>		<b>2</b>		<b>3</b>		<b>4</b>		<b>5</b>		<b>6</b>		<b>7</b>		<b>8</b>		<b>9</b>		<b>10</b>		<b>11</b>		<b>12</b>	



# HYDRAULIC SYSTEM REMOTE IO

## r41.63-5511-GEN-ESR40-RIO01

### LEGEND

	400Vac Power supply		Regular control signals
	400Vac UPS power supply		Analog & shielded signals
	230Vac Power supply		T/C connection
	230Vac UPS power supply		Communication connection

### CATEGORY

Power cables
CWP01: Regular power cables
CWP02: Shielded power cable
CWP03: Flexible power cables
CWP04: Regular high temperature power cables
Instrumentation and control cables
CWC01: Regular instrumentation control cables
CWC02: Shielded instrumentation control cables
CWC03: Thermocouple cable
CWC04: Flexible instrumentation control cables
CWC05: High voltage cables for ignition transformers
CWC06: Regular high temperature instrumentation control cables
Communication cables
CWE01: Fieldbus communication cable (Inside cabinets)
CWE02: Fieldbus communication cable (Outside cabinets)
CWE03: Optic fibre communication cable

CONTRACTOR



CONTRACTOR dwg number

2558-5511-GEN-E-DWG-SPD

Rev.

A

Project Code

E2558

Project Name

ALINVEST CZ

CLIENT

CLIENT dwg number

2558-5511-GEN-E-DWG-SPD

Rev.

-

Document Title

Equipment Spider Diagram

Scale

1:1

DESIGNED:

ANSA

DRAWN:

ANSA

APPROVED:

RORI

DATE:

01/12/2025

DATE:

01/12/2025

DATE:


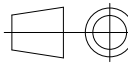
01/12/2025

Format

A3

Sheet

5 OF x

	1	2	3	4	5	6	7	8	9	10	11	12			
A	r41.63-5511-GEN-ESR40-RIO01	24G1 CWC01	r41.63-5511-GEN-ESR40-RIO01-WC11			3G1 CWC01	r41.63-5511-GEN-ESR40-IJB01-WC01			5511-GEN-ESR40-IJB01-SV0401A	Solenoid valve (12.1)	Bosh. 4WE6D6X/OFEG24N9K4 + PA10024-I 4/2		A	
		SF/IUTP CWC02	r41.63-5511-GEN-ESR40-RIO01-WE03			3G1 CWC01	r41.63-5511-GEN-ESR40-IJB01-WC02			5511-GEN-ESR40-IJB01-SV0401A	Solenoid valve (12.2)	Bosh. 4WE6D6X/OFEG24N9K4 + PA10024-I 4/2		A	
						3G1 CWC01	r41.63-5511-GEN-ESR40-IJB01-WC03			5511-GEN-ESR40-IJB01-SV0401A	Solenoid valve (12.3)	Bosh. 4WE6D6X/OFEG24N9K4 + PA10024-I 4/2			
						3G1 CWC01	r41.63-5511-GEN-ESR40-IJB01-WC04			5511-GEN-ESR40-IJB01-SV0401A	Solenoid valve (12.4)	Bosh. 4WE6D6X/OFEG24N9K4 + PA10024-I 4/2			
						3G1 CWC01	r41.63-5511-GEN-ESR40-IJB01-WC05			5511-GEN-ESR40-IJB01-SV0401A	Solenoid valve (12.5)	Bosh. 4WE6D6X/OFEG24N9K4 + PA10024-I 4/2			
						3G1 CWC01	r41.63-5511-GEN-ESR40-IJB01-WC06			5511-GEN-ESR40-IJB01-SV0401A	Solenoid valve (12.6)	Bosh. 4WE6D6X/OFEG24N9K4 + PA10024-I 4/2			
						3G1 CWC01	r41.63-5511-GEN-ESR40-IJB01-WC07			5511-GEN-ESR40-IJB01-SV0401A	Solenoid valve (12.7)	Bosh. 4WE6D6X/OFEG24N9K4 + PA10024-I 4/2			
B						3G1 CWC01	r41.63-5511-GEN-ESR40-IJB01-WC08			5511-GEN-ESR40-IJB01-SV0401A	Solenoid valve (12.8)	Bosh. 4WE6D6X/OFEG24N9K4 + PA10024-I 4/2		B	
						3G1 CWC01	r41.63-5511-GEN-ESR40-IJB01-WC09			5511-GEN-ESR40-IJB01-SV0401A	Solenoid valve (12.9)	Bosh. 4WE6D6X/OFEG24N9K4 + PA10024-I 4/2			
						3G1 CWC01	r41.63-5511-GEN-ESR40-IJB01-WC10			5511-GEN-ESR40-IJB01-SV0401A	Solenoid valve (12.10)	Bosh. 4WE6D6X/OFEG24N9K4 + PA10024-I 4/2			
						3G1 CWC01	r41.63-5511-GEN-ESR40-IJB01-WC11			5511-GEN-ESR40-IJB01-SV0401A	Solenoid valve (12.11)	Bosh. 4WE6D6X/OFEG24N9K4 + PA10024-I 4/2			
						3G1 CWC01	r41.63-5511-GEN-ESR40-IJB01-WC12			5511-GEN-ESR40-IJB01-SV0401A	Solenoid valve (12.12)	Bosh. 4WE6D6X/OFEG24N9K4 + PA10024-I 4/2			
						3G1 CWC01	r41.63-5511-GEN-ESR40-IJB01-WC13			5511-GEN-ESR40-IJB01-SV0401A	Solenoid valve (12.13)	Bosh. 4WE6D6X/OFEG24N9K4 + PA10024-I 4/2			
						3G1 CWC01	r41.63-5511-GEN-ESR40-IJB01-WC14			5511-GEN-ESR40-IJB01-SV0401A	Solenoid valve (12.14)	Bosh. 4WE6D6X/OFEG24N9K4 + PA10024-I 4/2			
C	r41.63-5511-GEN-ESR40-RIO01					3G1 CWC01	r41.63-5511-GEN-ESR40-IJB01-WC15			5511-GEN-ESR40-IJB01-SV0401A	Solenoid valve (12.15)	Bosh. 4WE6D6X/OFEG24N9K4 + PA10024-I 4/2		C	
						3G1 CWC01	r41.63-5511-GEN-ESR40-IJB01-WC16			5511-GEN-ESR40-IJB01-SV0401B	Solenoid valve (12.1)	Bosh. 4WE6D6X/OFEG24N9K4 + PA10024-I 4/2			
						3G1 CWC01	r41.63-5511-GEN-ESR40-IJB01-WC17			5511-GEN-ESR40-IJB01-SV0401B	Solenoid valve (12.2)	Bosh. 4WE6D6X/OFEG24N9K4 + PA10024-I 4/2			
						3G1 CWC01	r41.63-5511-GEN-ESR40-IJB01-WC18			5511-GEN-ESR40-IJB01-SV0401B	Solenoid valve (12.3)	Bosh. 4WE6D6X/OFEG24N9K4 + PA10024-I 4/2			
						3G1 CWC01	r41.63-5511-GEN-ESR40-IJB01-WC19			5511-GEN-ESR40-IJB01-SV0401B	Solenoid valve (12.4)	Bosh. 4WE6D6X/OFEG24N9K4 + PA10024-I 4/2			
						3G1 CWC01	r41.63-5511-GEN-ESR40-IJB01-WC20			5511-GEN-ESR40-IJB01-SV0401B	Solenoid valve (12.5)	Bosh. 4WE6D6X/OFEG24N9K4 + PA10024-I 4/2			
						3G1 CWC01	r41.63-5511-GEN-ESR40-IJB01-WC21			5511-GEN-ESR40-IJB01-SV0401B	Solenoid valve (12.6)	Bosh. 4WE6D6X/OFEG24N9K4 + PA10024-I 4/2			
D						3G1 CWC01	r41.63-5511-GEN-ESR40-IJB01-WC22			5511-GEN-ESR40-IJB01-SV0401B	Solenoid valve (12.7)	Bosh. 4WE6D6X/OFEG24N9K4 + PA10024-I 4/2		D	
						3G1 CWC01	r41.63-5511-GEN-ESR40-IJB01-WC23			5511-GEN-ESR40-IJB01-SV0401B	Solenoid valve (12.8)	Bosh. 4WE6D6X/OFEG24N9K4 + PA10024-I 4/2			
						3G1 CWC01	r41.63-5511-GEN-ESR40-IJB01-WC24			5511-GEN-ESR40-IJB01-SV0401B	Solenoid valve (12.9)	Bosh. 4WE6D6X/OFEG24N9K4 + PA10024-I 4/2			
						3G1 CWC01	r41.63-5511-GEN-ESR40-IJB01-WC25			5511-GEN-ESR40-IJB01-SV0401B	Solenoid valve (12.10)	Bosh. 4WE6D6X/OFEG24N9K4 + PA10024-I 4/2			
						3G1 CWC01	r41.63-5511-GEN-ESR40-IJB01-WC26			5511-GEN-ESR40-IJB01-SV0401B	Solenoid valve (12.11)	Bosh. 4WE6D6X/OFEG24N9K4 + PA10024-I 4/2			
						3G1 CWC01	r41.63-5511-GEN-ESR40-IJB01-WC27			5511-GEN-ESR40-IJB01-SV0401B	Solenoid valve (12.12)	Bosh. 4WE6D6X/OFEG24N9K4 + PA10024-I 4/2			
						3G1 CWC01	r41.63-5511-GEN-ESR40-IJB01-WC28			5511-GEN-ESR40-IJB01-SV0401B	Solenoid valve (12.13)	Bosh. 4WE6D6X/OFEG24N9K4 + PA10024-I 4/2			
E					3G1 CWC01	r41.63-5511-GEN-ESR40-IJB01-WC29			5511-GEN-ESR40-IJB01-SV0401B	Solenoid valve (12.14)	Bosh. 4WE6D6X/OFEG24N9K4 + PA10024-I 4/2		E		
					3G1 CWC01	r41.63-5511-GEN-ESR40-IJB01-WC30			5511-GEN-ESR40-IJB01-SV0401B	Solenoid valve (12.15)	Bosh. 4WE6D6X/OFEG24N9K4 + PA10024-I 4/2				
F						4x1+SH CWC02	r41.63-5511-GEN-ESR40-IJB01-WC32			M12x1 connector 5511-GEN-ESR40-IJB01-LTI0401	Level and Temperature Sensor (4)	Bosch. ABZMS-41-2X/500/D2/DC-K24			
						4G1 CWC01	r41.63-5511-GEN-ESR40-IJB01-WC33			5511-GEN-ESR40-IJB01-ZS0401	Safety level switch (75)	Glual. CMC000010-L=XXXmm		F	
G	r41.63-5511-GEN-ESR40-RIO01												G		
H						CONTRACTOR			CONTRACTOR dwg number	Rev. A	Project Code E2558	Project Name ALINVEST CZ		H	
									2558-5511-GEN-E-DWG-SPD			Document Title Equipment Spider Diagram			
						CLIENT			CLIENT dwg number	Rev. -	DESIGNED: ANSA		Scale 1:1		
									2558-5511-GEN-E-DWG-SPD			DRAWN: ANSA		Format A3	
												APPROVED: RORI		Sheet 7 OF x	
	A	29/11/2025	INITIAL VERSION		RORI	RORI	JOCA				DATE: 01/12/2025	DATE: 01/12/2025	DATE: 01/12/2025		
	Rev.	Date	Revisions description		Designed	Draw	Approved								
	1		2	3	4	5	6	7	8	9	10	11	12		





